

SUMMARY OF THE DATA

AS OF SEPTEMBER 30, 2022

Cambridge Associates' company performance statistics include \$54.9 billion invested in private clean tech companies, \$52.7 billion in realized proceeds, and \$34.0 billion in remaining net asset value through September 30, 2022. These numbers create a gross total value/paid-in capital multiple of 1.6x, a gross distributed/paid-in capital multiple of 1.0x, and a gross internal rate of return (IRR) of 9.1%.

Investments were drawn from 669 different funds (440 venture capital funds, 157 private equity funds, 46 private equity energy funds, 7 subordinated capital funds, and 19 infrastructure funds).

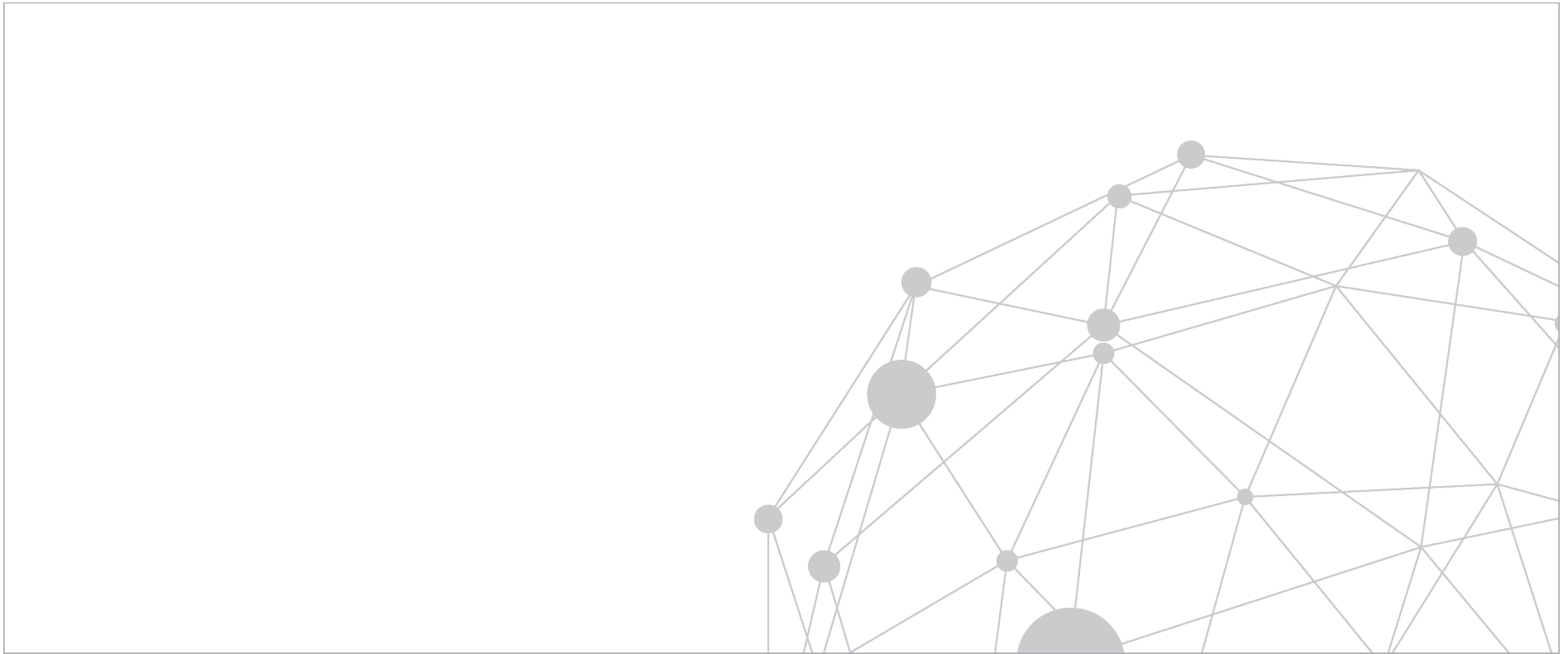
Across the four major clean tech investment groups, 14.3% of capital has been deployed in renewable power manufacturing investments, 48.8% in renewable power development investments, 16.2% in energy optimization investments, and 20.7% in resource solutions investments. On a total investment basis as of September 30, 2022, three of the four clean tech groups have achieved a positive gross IRR. Renewable Power Development had the strongest returns in gross IRR terms, returning 12.9%.

Geographically, \$32.8 billion (59.7% of capital) in the Cambridge Associates sample was invested in U.S.-based companies. Developed markets outside of the United States received \$14.1 billion of investment (25.7% of total clean tech investment), while emerging markets accounted for \$8.0 billion of investment (14.5% of total clean tech investment). United States-based companies have generated a gross company-level IRR of 8.1%, while companies based outside the United States have generated a gross IRR of 11.3%. A limited sample of emerging markets investments (178) have performed better than United States and developed ex U.S. investments.

The clean tech private investment sector remains young, and investors must therefore be cautious about drawing forward-looking conclusions from the data at this time. As the sector evolves and matures, Cambridge Associates will continue to measure company-level performance of clean tech investments across all funds on a quarterly basis.

Questions should be directed to cleantechdata@cambridgeassociates.com.

CLEAN TECH COMPANY PERFORMANCE STATISTICS



CLEAN TECH COMPANY PERFORMANCE STATISTICS

AS OF SEPTEMBER 30, 2022

SINCE INCEPTION SUMMARY STATISTICS

Pooled Gross IRR

PERFORMANCE STATISTICS	POOLED GROSS IRR (%)	PAID-IN CAPITAL (\$B)	DPI	TVPI	NUMBER OF INVESTMENTS
CAMBRIDGE ASSOCIATES GLOBAL CLEAN TECH	9.1	54.9	1.0	1.6	1,678
BY GEOGRAPHY	POOLED GROSS IRR (%)	PAID-IN CAPITAL (\$B)	DPI	TVPI	NUMBER OF INVESTMENTS
US Clean Tech	8.1	32.8	0.9	1.6	1,219
Ex US Clean Tech	11.3	22.1	1.0	1.6	459
BY STAGE	POOLED GROSS IRR (%)	PAID-IN CAPITAL (\$B)	DPI	TVPI	NUMBER OF INVESTMENTS
Early Stage Clean Tech ¹	5.0	13.5	0.8	1.4	968
Late Stage Clean Tech ²	11.5	41.4	1.0	1.6	710
PERFORMANCE STATISTICS	POOLED GROSS IRR (%)	PAID-IN CAPITAL (\$B)	DPI	TVPI	NUMBER OF INVESTMENTS
Renewable Power Manufacturing ³	-6.4	7.9	0.6	0.7	436
Renewable Power Development ⁴	12.9	26.8	1.0	1.7	219
Energy Optimization ⁵	12.6	8.9	1.1	1.8	598
Resource Solutions ⁶	8.7	11.3	1.0	1.7	425

¹ Includes seed, start-up, and early stage investments.² Includes expansion, growth, and private equity investments.³ Example investments include solar, wind, biofuel, and fuel cell manufacturing.⁴ Example investments include the financing, management, operation, and ownership of clean power generation projects.⁵ Example investments include smart grid, energy efficiency, energy management, lighting, energy storage, and sustainable mobility.⁶ Example investments include waste & recycling, water & wastewater, advanced materials, environmental services, sustainable agriculture solutions, and emissions controls.

Source: ©2023 Cambridge Associates Private Investments Database. Cambridge Associates LLC, all rights reserved.

Performance includes 1,678 investments in 1,057 companies from 669 funds and reflects gross deal level returns from 2000 to 2020.

Funds are distributed across U.S. venture capital (341 funds), non-U.S. venture capital (99 funds), U.S. private equity (79 funds), non-U.S. private equity (78 funds), Private Equity Energy (46 funds), Subordinated Capital (7 funds) and Infrastructure (19 funds).

CLEAN TECH COMPANY PERFORMANCE STATISTICS

AS OF SEPTEMBER 30, 2022

SINCE INCEPTION ANALYSIS BY YEARS OF INITIAL INVESTMENT

By Geography

TOTAL PAID-IN CAPITAL (\$B) OF COMPANIES RECEIVING INITIAL INVESTMENTS IN:					
	2000-2004	2005-2009	2010-2014	2015-2020	TOTAL (2000-2020)
US Clean Tech	1.0	13.3	5.5	13.0	32.8
Ex US Clean Tech	0.4	5.6	6.9	9.2	22.1
CAMBRIDGE ASSOCIATES GLOBAL CLEAN TECH	1.4	18.9	12.4	22.2	54.9
DISTRIBUTED/PAID-IN CAPITAL MULTIPLE OF COMPANIES RECEIVING INITIAL INVESTMENTS IN:					
	2000-2004	2005-2009	2010-2014	2015-2020	TOTAL (2000-2020)
US Clean Tech	1.6	0.9	1.3	0.8	0.9
Ex US Clean Tech	4.0	1.0	1.1	0.7	1.0
CAMBRIDGE ASSOCIATES GLOBAL CLEAN TECH	2.3	0.9	1.2	0.8	1.0
TOTAL VALUE/PAID-IN CAPITAL MULTIPLE OF COMPANIES RECEIVING INITIAL INVESTMENTS IN:					
	2000-2004	2005-2009	2010-2014	2015-2020	TOTAL (2000-2020)
US Clean Tech	1.6	1.0	1.9	2.0	1.6
Ex US Clean Tech	4.0	1.1	1.3	2.0	1.6
CAMBRIDGE ASSOCIATES GLOBAL CLEAN TECH	2.3	1.0	1.5	2.0	1.6
POOLED GROSS IRR (%)					
	2000-2004	2005-2009	2010-2014	2015-2020	TOTAL (2000-2020)
US Clean Tech	8.6	-0.2	12.6	21.9	8.1
Ex US Clean Tech	72.4	1.8	5.6	21.0	11.3
CAMBRIDGE ASSOCIATES GLOBAL CLEAN TECH	35.6	0.4	9.3	21.5	9.1

Source: ©2023 Cambridge Associates Private Investments Database. Cambridge Associates LLC, all rights reserved.

Performance includes 1,678 investments in 1,057 companies from 669 funds and reflects gross deal level returns from 2000 to 2020.

Funds are distributed across U.S. venture capital (341 funds), non-U.S. venture capital (99 funds), U.S. private equity (79 funds), non-U.S. private equity (78 funds), Private Equity Energy (46 funds), Subordinated Capital (7 funds) and Infrastructure (19 funds).

CLEAN TECH COMPANY PERFORMANCE STATISTICS

AS OF SEPTEMBER 30, 2022

SINCE INCEPTION ANALYSIS BY YEARS OF INITIAL INVESTMENT

By Stage

TOTAL PAID-IN CAPITAL (\$B) OF COMPANIES RECEIVING INITIAL INVESTMENTS IN:					
	2000-2004	2005-2009	2010-2014	2015-2020	TOTAL (2000-2020)
Early Stage Clean Tech ¹	1.0	6.3	2.7	3.5	13.5
Late Stage Clean Tech ²	0.4	12.5	9.7	18.7	41.4
CAMBRIDGE ASSOCIATES GLOBAL CLEAN TECH	1.4	18.9	12.4	22.2	54.9
DISTRIBUTED/PAID-IN CAPITAL MULTIPLE OF COMPANIES RECEIVING INITIAL INVESTMENTS IN:					
	2000-2004	2005-2009	2010-2014	2015-2020	TOTAL (2000-2020)
Early Stage Clean Tech ¹	1.5	0.5	1.2	0.7	0.8
Late Stage Clean Tech ²	4.2	1.1	1.2	0.8	1.0
CAMBRIDGE ASSOCIATES GLOBAL CLEAN TECH	2.3	0.9	1.2	0.8	1.0
TOTAL VALUE/PAID-IN CAPITAL MULTIPLE OF COMPANIES RECEIVING INITIAL INVESTMENTS IN:					
	2000-2004	2005-2009	2010-2014	2015-2020	TOTAL (2000-2020)
Early Stage Clean Tech ¹	1.5	0.8	2.3	1.9	1.4
Late Stage Clean Tech ²	4.2	1.1	1.3	2.0	1.6
CAMBRIDGE ASSOCIATES GLOBAL CLEAN TECH	2.3	1.0	1.5	2.0	1.6
POOLED GROSS IRR (%)					
	2000-2004	2005-2009	2010-2014	2015-2020	TOTAL (2000-2020)
Early Stage Clean Tech ¹	5.4	-2.3	13.0	23.0	5.0
Late Stage Clean Tech ²	69.9	2.8	7.4	21.3	11.5
CAMBRIDGE ASSOCIATES GLOBAL CLEAN TECH	35.6	0.4	9.3	21.5	9.1

¹ Includes seed, start-up, and early stage investments.² Includes expansion, growth, and private equity investments.

Source: ©2023 Cambridge Associates Private Investments Database. Cambridge Associates LLC, all rights reserved.

Performance includes 1,678 investments in 1,057 companies from 669 funds and reflects gross deal level returns from 2000 to 2020.

Funds are distributed across U.S. venture capital (341 funds), non-U.S. venture capital (99 funds), U.S. private equity (79 funds), non-U.S. private equity (78 funds), Private Equity Energy (46 funds), Subordinated Capital (7 funds) and Infrastructure (19 funds).

CLEAN TECH COMPANY PERFORMANCE STATISTICS

AS OF SEPTEMBER 30, 2022

SINCE INCEPTION ANALYSIS BY YEARS OF INITIAL INVESTMENT

By Subsector Group

TOTAL PAID-IN CAPITAL (\$B) OF COMPANIES RECEIVING INITIAL INVESTMENTS IN:					
	2000-2004	2005-2009	2010-2014	2015-2020	TOTAL (2000-2020)
Renewable Power Manufacturing ¹	0.5	5.6	1.7	0.2	7.9
Renewable Power Development ²	NA	6.2	4.8	15.7	26.8
Energy Optimization ³	0.7	3.4	2.3	2.5	8.9
Resource Solutions ⁴	NA	3.7	3.6	3.9	11.3
CAMBRIDGE ASSOCIATES GLOBAL CLEAN TECH	1.4	18.9	12.4	22.2	54.9
DISTRIBUTED/PAID-IN CAPITAL MULTIPLE OF COMPANIES RECEIVING INITIAL INVESTMENTS IN:					
	2000-2004	2005-2009	2010-2014	2015-2020	TOTAL (2000-2020)
Renewable Power Manufacturing ¹	2.7	0.5	0.3	0.2	0.6
Renewable Power Development ²	NA	1.2	1.3	0.8	1.0
Energy Optimization ³	2.2	1.1	1.1	0.9	1.1
Resource Solutions ⁴	NA	1.0	1.5	0.6	1.0
CAMBRIDGE ASSOCIATES GLOBAL CLEAN TECH	2.3	0.9	1.2	0.8	1.0
TOTAL VALUE/PAID-IN CAPITAL MULTIPLE OF COMPANIES RECEIVING INITIAL INVESTMENTS IN:					
	2000-2004	2005-2009	2010-2014	2015-2020	TOTAL (2000-2020)
Renewable Power Manufacturing ¹	2.7	0.6	0.5	1.6	0.7
Renewable Power Development ²	NA	1.2	1.4	2.0	1.7
Energy Optimization ³	2.2	1.4	1.8	2.4	1.8
Resource Solutions ⁴	NA	1.0	2.1	1.9	1.7
CAMBRIDGE ASSOCIATES GLOBAL CLEAN TECH	2.3	1.0	1.5	2.0	1.6
POOLED GROSS IRR (%)					
	2000-2004	2005-2009	2010-2014	2015-2020	TOTAL (2000-2020)
Renewable Power Manufacturing ¹	45.9	-8.7	-14.1	11.4	-6.4
Renewable Power Development ²	NA	3.9	10.1	21.0	12.9
Energy Optimization ³	31.6	5.4	11.0	30.5	12.6
Resource Solutions ⁴	NA	0.6	14.0	18.9	8.7
CAMBRIDGE ASSOCIATES GLOBAL CLEAN TECH	35.6	0.4	9.3	21.5	9.1

NA Indicates inadequate number of companies in sample. Companies in NA columns will contribute to Total (2000 - 2020).

¹ Example investments include solar, wind, biofuel, and fuel cell manufacturing.

² Example investments include the financing, management, operation, and ownership of clean power generation projects.

³ Example investments include smart grid, energy efficiency, energy management, lighting, energy storage, and sustainable mobility.

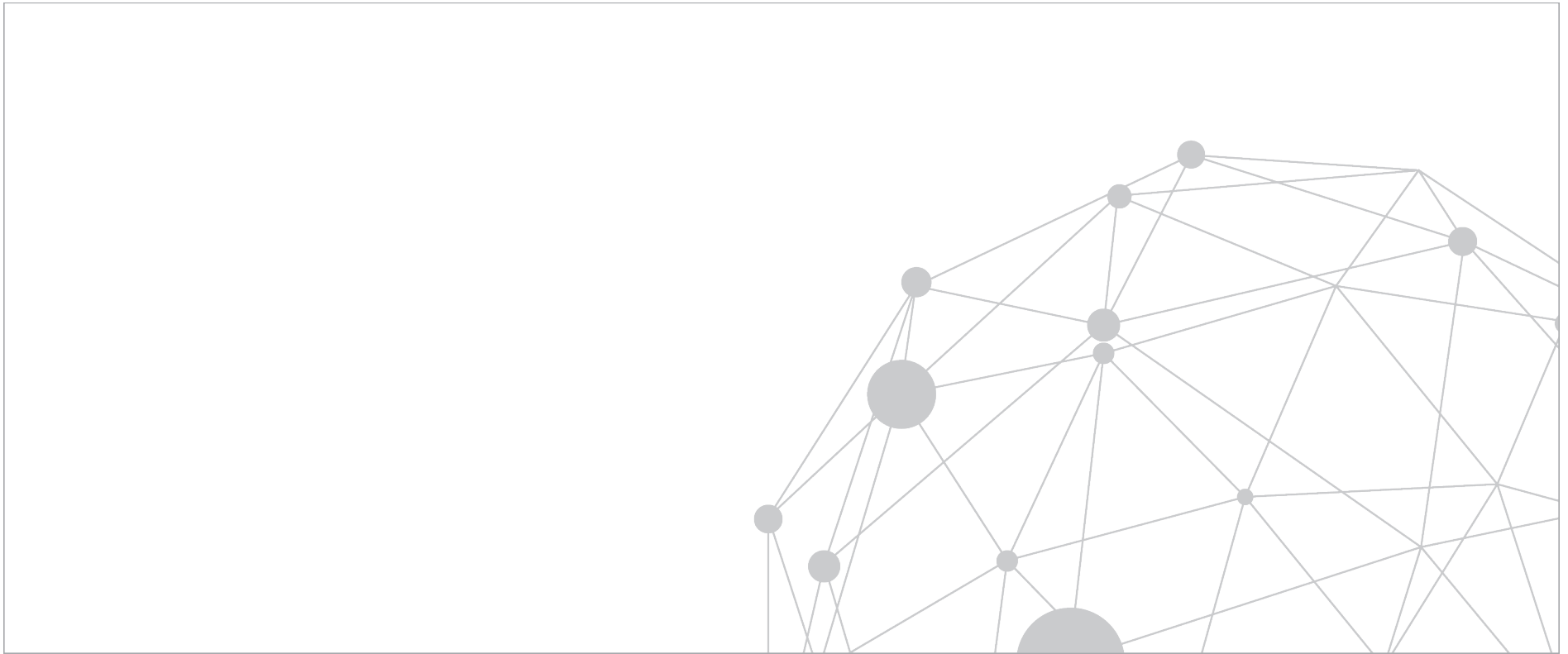
⁴ Example investments include waste & recycling, water & wastewater, advanced materials, environmental services, sustainable agriculture solutions, and emissions controls.

Source: ©2023 Cambridge Associates Private Investments Database. Cambridge Associates LLC, all rights reserved.

Performance includes 1,678 investments in 1,057 companies from 669 funds and reflects gross deal level returns from 2000 to 2020.

Funds are distributed across U.S. venture capital (341 funds), non-U.S. venture capital (99 funds), U.S. private equity (79 funds), non-U.S. private equity (78 funds), Private Equity Energy (46 funds), Subordinated Capital (7 funds) and Infrastructure (19 funds).

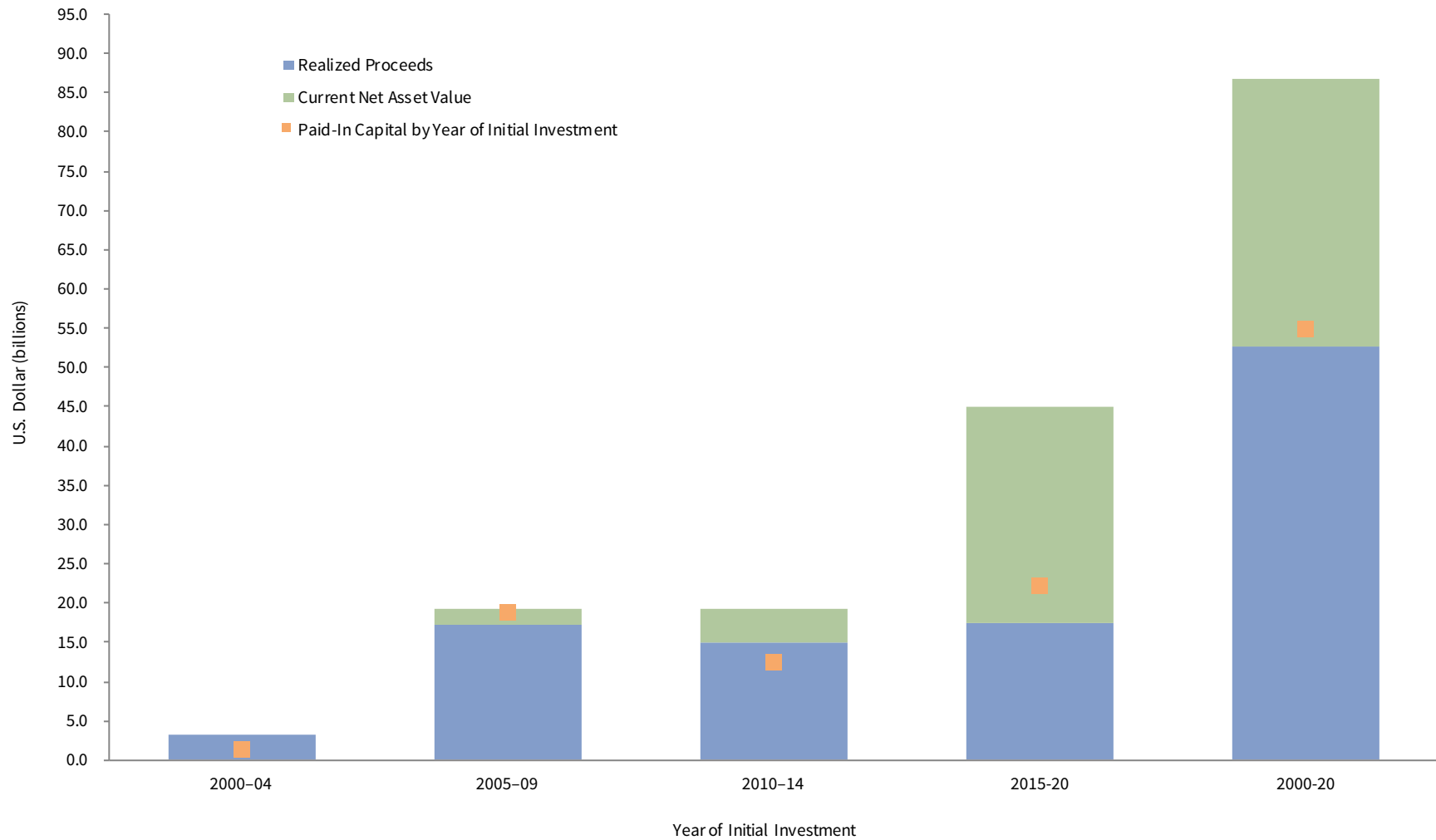
CLEAN TECH EXHIBITS



CLEAN TECH EXHIBITS

AS OF SEPTEMBER 30, 2022

SINCE INCEPTION ANALYSIS: PERFORMANCE BY YEARS OF INITIAL INVESTMENT



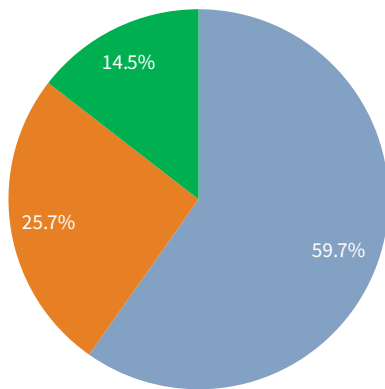
Source: ©2023 Cambridge Associates Private Investments Database. Cambridge Associates LLC, all rights reserved. Performance includes 1,678 investments in 1,057 companies from 669 funds and reflects gross deal level returns from 2000 to 2020.

CLEAN TECH COMPANY PERFORMANCE STATISTICS

CLEAN TECH EXHIBITS

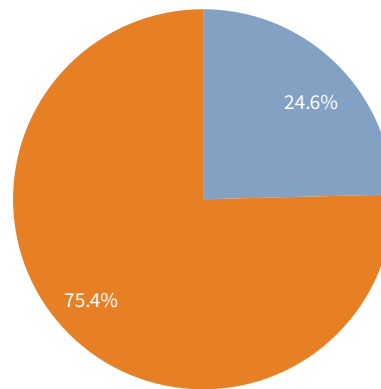
AS OF SEPTEMBER 30, 2022

CLEAN TECH INVESTED CAPITAL BY GEOGRAPHY



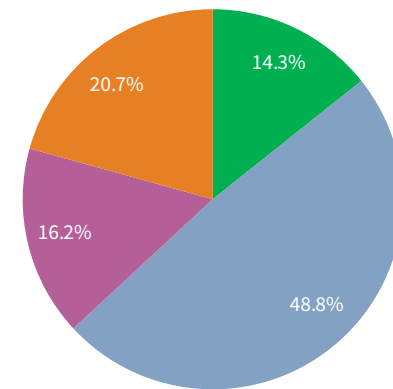
- US Clean Tech
- Ex US Developed Clean Tech
- Emerging Markets Clean Tech

CLEAN TECH INVESTED CAPITAL BY STAGE



- Early Stage Clean Tech
- Late Stage Clean Tech

CLEAN TECH INVESTED CAPITAL BY SUBSECTOR



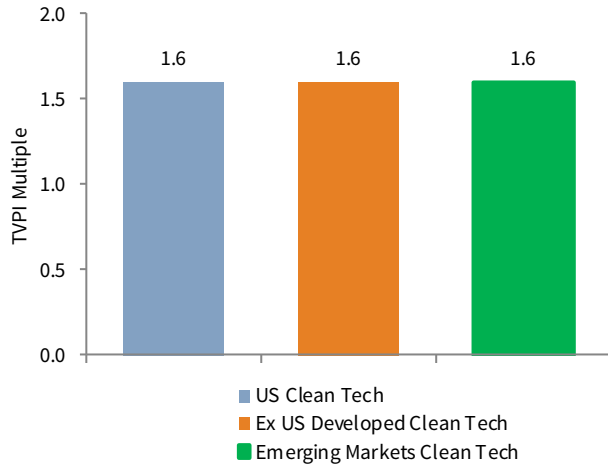
- Renewable Power Manufacturing
- Renewable Power Development
- Energy Optimization
- Resource Solutions

CLEAN TECH COMPANY PERFORMANCE STATISTICS

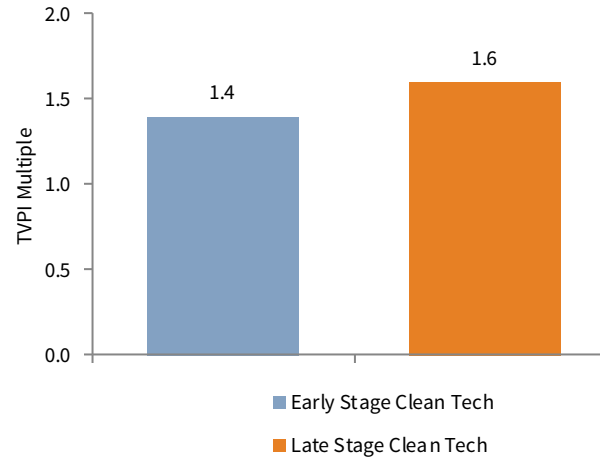
AS OF SEPTEMBER 30, 2022

CLEAN TECH EXHIBITS

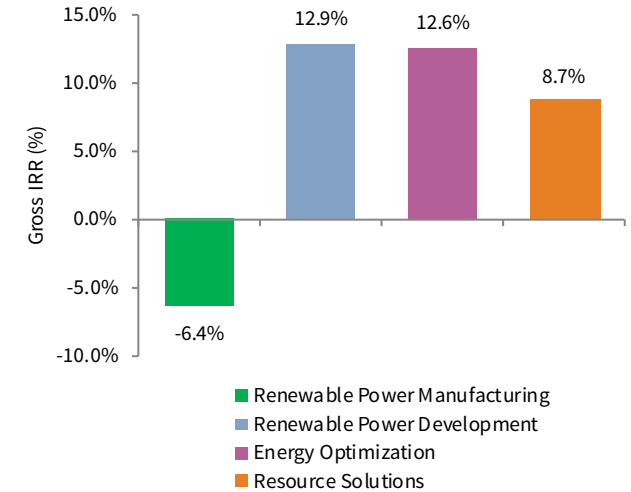
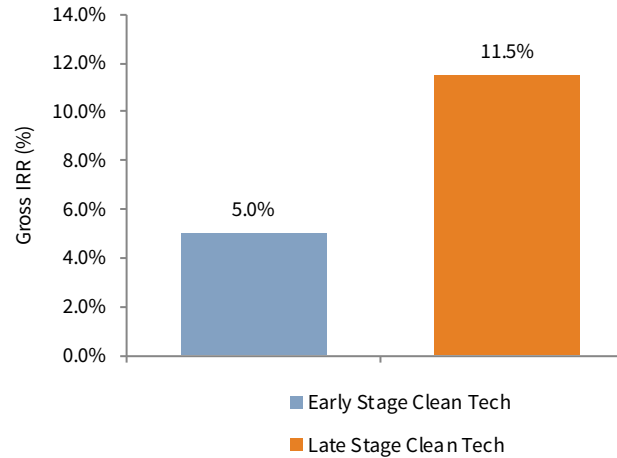
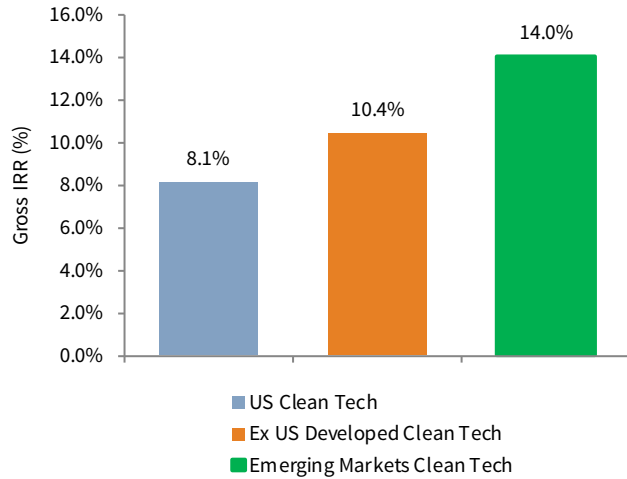
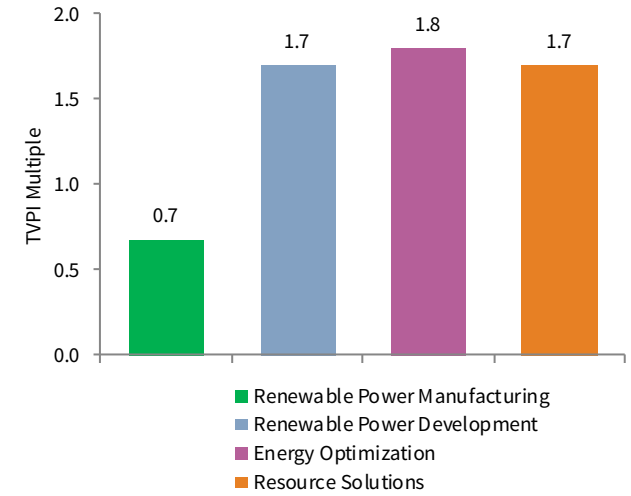
CLEAN TECH RETURNS BY GEOGRAPHY



CLEAN TECH RETURNS BY STAGE



CLEAN TECH RETURNS BY SUBSECTOR

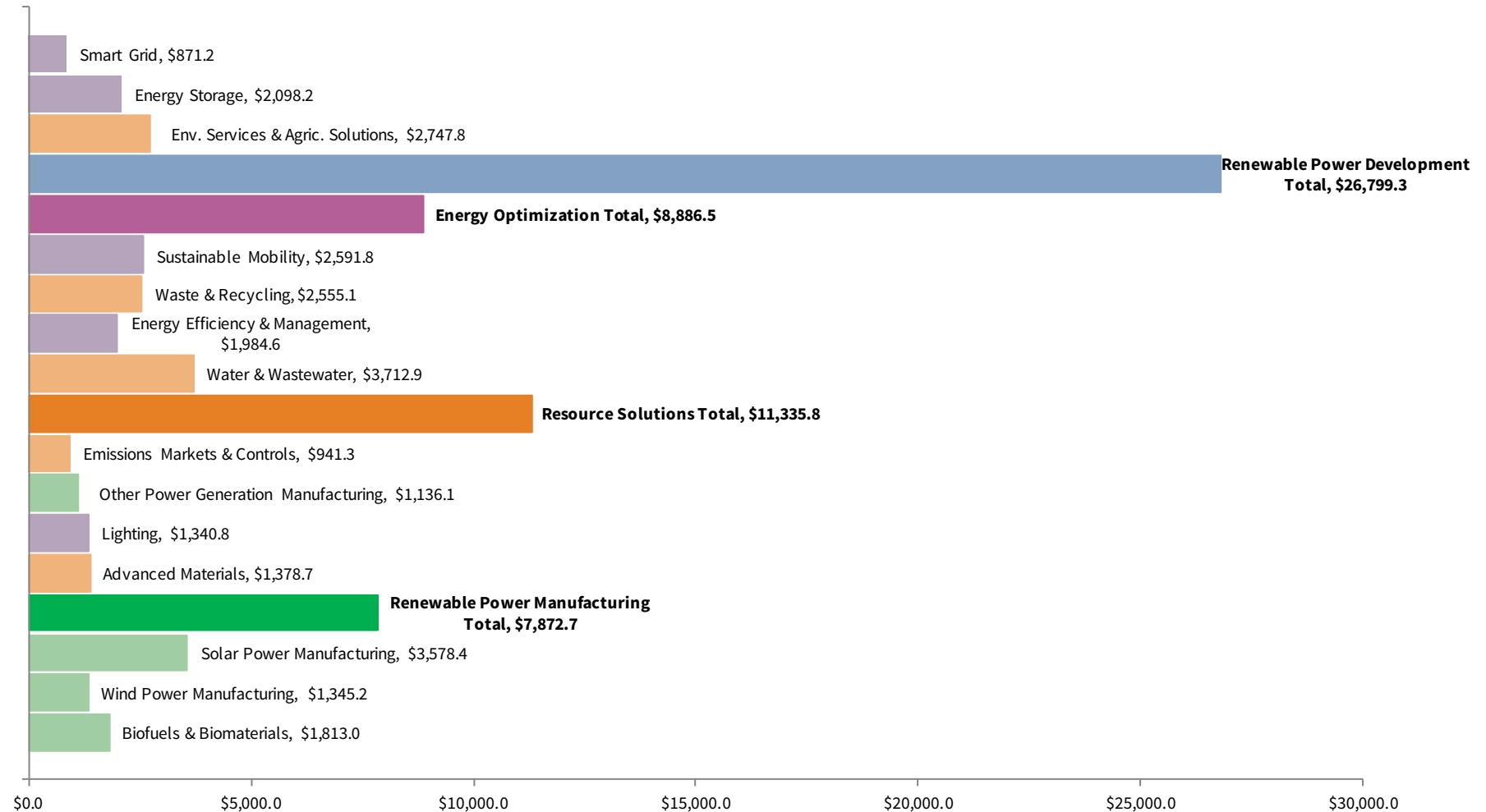


Source: ©2023 Cambridge Associates Private Investments Database. Cambridge Associates LLC, all rights reserved. Performance includes 1,678 investments in 1,057 companies from 669 funds and reflects gross deal level returns from 2000 to 2020.

CLEAN TECH EXHIBITS

AS OF SEPTEMBER 30, 2022

SINCE INCEPTION INVESTED CAPITAL BY CLEAN TECH SUBSECTOR (\$ MILLIONS)

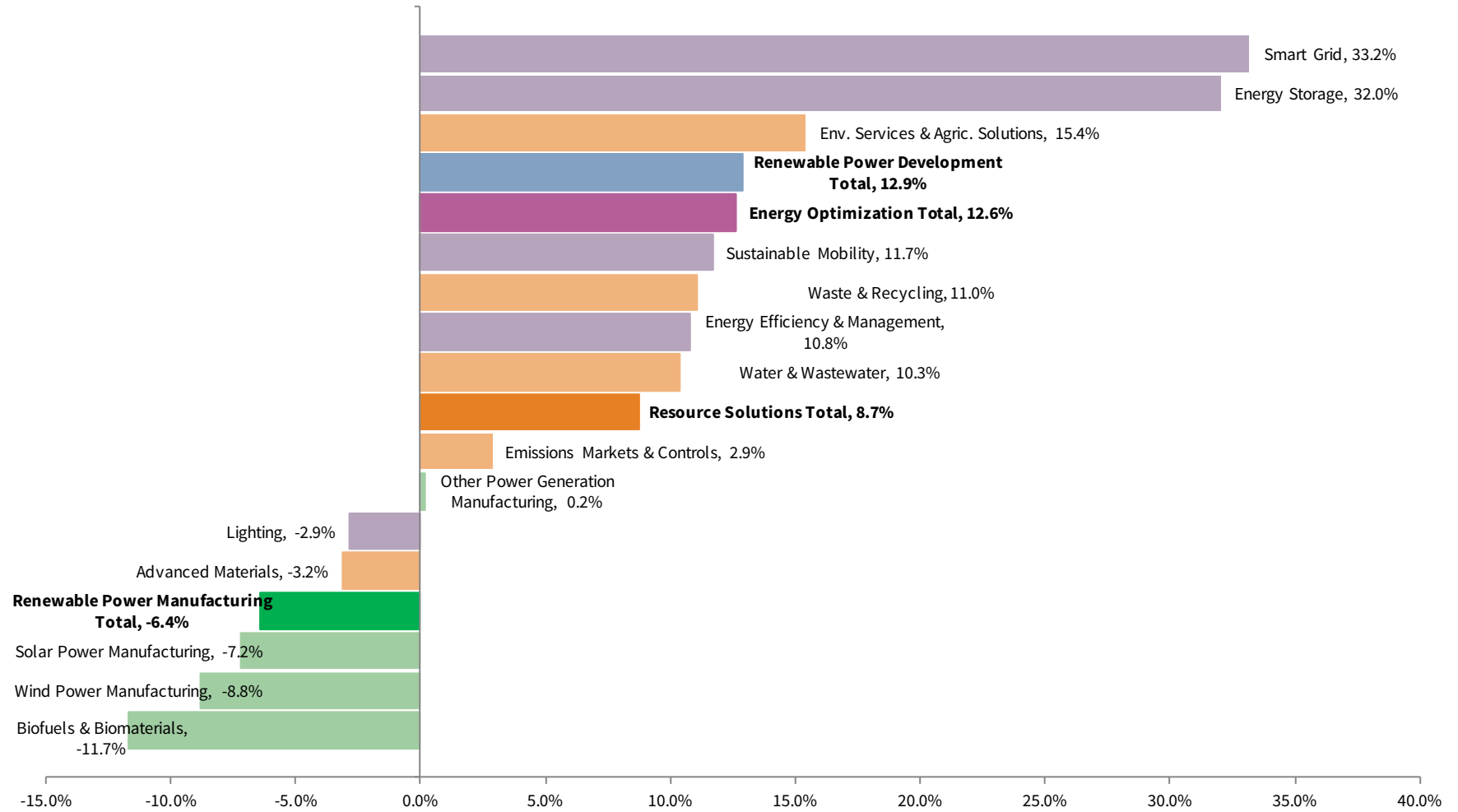


Source: ©2023 Cambridge Associates Private Investments Database. Cambridge Associates LLC, all rights reserved. Performance includes 1,678 investments in 1,057 companies from 669 funds and reflects gross deal level returns from 2000 to 2020.

CLEAN TECH EXHIBITS

SINCE INCEPTION IRR BY CLEAN TECH SUBSECTOR

Pooled Gross IRR



NOTE ON PERFORMANCE DATABASE CHANGES

AS OF SEPTEMBER 30, 2022

Our goal is to provide you with the most accurate and relevant performance information possible; as a result, Cambridge Associates' private investments performance database will continually reflect changes to the underlying pool of contributing funds and clean technology company investments.

As these changes occur, you may notice quarter to quarter changes in the results of some historical benchmark return analyses.



Copyright © 2023 by Cambridge Associates (“CA”). All rights reserved. Confidential.

This report may not be displayed, reproduced, distributed, transmitted, or used to create derivative works in any form, in whole or in part, by any means, without written permission from CA. Copying of this publication is a violation of US and global copyright laws (e.g., 17 USC. 101 et seq.). Violators of this copyright may be subject to liability for substantial monetary damages. The information and material published in this report are confidential and non-transferable. Therefore, recipients may not disclose any information or material derived from this report to third parties, or use information or material from this report, without prior written authorization. For the avoidance of doubt, this report is not for enterprise use and may not be used to create financial instruments or products. This report is provided for informational purposes only. It is not intended to constitute an offer of securities of any of the issuers that may be described in the report. No part of this report is intended as a recommendation of any firm or any security, unless expressly stated otherwise. Nothing contained in this report should be construed as the provision of any tax or legal advice. Past performance is not indicative of future performance. Any information or opinions provided in this report are provided as-is as of the date of the report, and CA is under no obligation to update the information or communicate that any updates have been made. Information contained herein may have been provided by third parties, including investment firms providing information on returns and assets under management, and CA takes no responsibility for the accuracy thereof. Managers may report returns to CA gross (before the deduction of management fees), net (after the deduction of management fees), or both.

CA includes the following: Cambridge Associates, LLC, a Massachusetts limited liability company with offices in Arlington, VA; Boston, MA; Dallas, TX; Menlo Park, CA; San Francisco, CA; and New York, NY. Cambridge Associates Limited, a limited company in England and Wales (Registration No. 06135829) authorised and regulated by the Financial Conduct Authority in the conduct of Investment Business. Cambridge Associates Limited, LLC, a Massachusetts limited liability company with a branch office in Sydney, Australia (ARBN 109 366 654). Cambridge Associates Asia Pte Ltd, a Singapore corporation (Registration No. 200101063G). Cambridge Associates Investment Consultancy (Beijing) Ltd, a wholly owned subsidiary of Cambridge Associates, LLC registered with the Beijing Administration for Industry and Commerce (Registration No. 110000450174972). Cambridge Associates GmbH, a limited liability company incorporated in the Federal Republic of Germany registered at the commercial register at the local court (Amtsgericht) of Munich under company number HRB 253119.