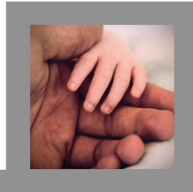
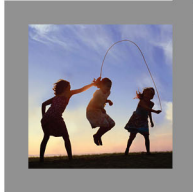
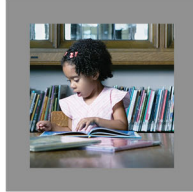
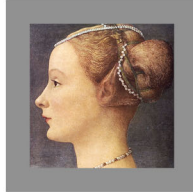
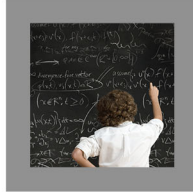
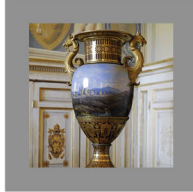
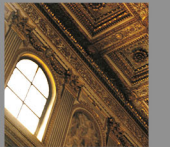
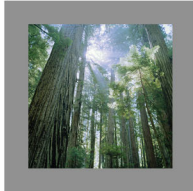


September 30, 2013

Cambridge Associates LLC U.S. Venture Capital Index® and Selected Benchmark Statistics



CAMBRIDGE ASSOCIATES LLC

Table of Contents

U.S. Venture Capital

Fund Index Analysis	2
mPME Returns	
Index Returns	

Fund Since Inception Analysis	7
mPME Returns	
Since Inception Returns	

Company Analysis	18
------------------	----

Methodology	21
-------------	----



U.S. Venture Capital: Fund Index Analysis



U.S. Venture Capital: Fund Index Summary: End-to-End Pooled Return Compared to CA Modified Public Market Equivalent (mPME) Net to Limited Partners

CA Index	1-Year	3-Year	5-Year	10-Year	15-Year	20-Year	25-Year	30-Year
Cambridge Associates LLC U.S Venture Capital Index^{®1}	15.09	14.38	7.51	8.58	26.14	30.05	20.20	17.15
mPME Analysis ²								
S&P 500 Index	19.26	16.20	10.70	7.94	6.01	8.13	9.48	10.02
Value-Add (bps)	-417	-182	-319	64	2,013	2,192	1,072	713
Russell 2000 [®] Index	29.87	18.08	11.68	10.03	9.04	9.20	9.89	9.75
Value-Add (bps)	-1,478	-369	-417	-145	1,710	2,085	1,031	741
Russell 3000 [®] Index	21.50	16.67	11.22	8.47	6.59	8.34	9.64	10.02
Value-Add (bps)	-641	-228	-371	11	1,955	2,171	1,056	713

The Cambridge Associates LLC U.S. venture capital Index[®] is an end-to-end calculation based on data compiled from 1,467 U.S. venture capital funds (946 early stage, 164 late & expansion stage, 351 multi-stage and 6 venture debt funds), including fully liquidated partnerships, formed between 1981 and 2013.

¹ Pooled end-to-end return, net of fees, expenses, and carried interest.

² CA Modified Public Market Equivalent (mPME) replicates private investment performance under public market conditions. The public index's shares are purchased and sold according to the private fund cash flow schedule, with distributions calculated in the same proportion as the private fund, and mPME NAV is a function of mPME cash flows and public index returns. "Value-Add" shows (in basis points) the difference between the actual private investment return and the mPME calculated return. Refer to Methodology page for details.

Sources: Cambridge Associates LLC, Frank Russell Company, Standard & Poor's and Thomson Reuters Datastream.

U.S. Venture Capital Fund Index Summary: End-to-End Pooled Return
Net to Limited Partners

Index	1-Quarter	YTD	1-Year	3-Year	5-Year	10-Year	15-Year	20-Year	25-Year	30-Year
Cambridge Associates LLC U.S. Venture Capital Index^{®1}	6.46	13.95	15.09	14.38	7.51	8.58	26.14	30.05	20.20	17.15
U.S. Venture Capital - Early Stage Index¹	6.13	12.52	13.64	14.93	7.05	7.63	96.52	43.47	26.11	20.52
U.S. Venture Capital - Late & Expansion Stage Index¹	8.87	19.97	21.40	15.72	12.20	11.72	9.13	11.66	12.47	12.38
U.S. Venture Capital - Multi-Stage Index¹	6.21	14.31	15.36	13.12	6.76	9.26	7.79	13.59	12.29	11.50
Barclays Government/Credit Bond Index	0.36	-2.32	-1.96	2.89	5.71	4.52	5.24	5.73	6.89	7.77
Dow Jones Industrial Average Index	2.12	17.64	15.59	14.94	9.93	7.74	6.93	10.02	10.97	11.81
Dow Jones U.S. Small Cap Index	8.54	23.98	28.56	18.24	12.86	10.67	10.95	10.38	NA	NA
Dow Jones U.S. TopCap Index	5.75	20.53	20.41	16.51	10.43	8.03	5.67	8.80	NA	NA
Nasdaq Composite Index*	10.82	24.90	21.03	16.77	12.51	7.76	5.48	8.32	9.53	8.85
Russell 1000® Index	6.02	20.76	20.91	16.64	10.53	7.98	5.78	8.94	10.13	10.74
Russell 2000® Index	10.21	27.69	30.06	18.29	11.15	9.64	8.91	8.96	9.80	9.37
S&P 500 Index	5.25	19.79	19.34	16.27	10.02	7.57	5.33	8.80	9.96	10.72
Wilshire 5000 Total Market Index	6.04	20.85	20.97	16.48	10.43	8.19	6.09	8.84	9.98	10.49

The Cambridge Associates LLC U.S. Venture Capital Index[®] is an end-to-end calculation based on data compiled from 1,467 U.S. venture capital funds (946 early stage, 164 late & expansion stage, 351 multi-stage and 6 venture debt funds), including fully liquidated partnerships, formed between 1981 and 2013.

¹Pooled end-to-end return, net of fees, expenses, and carried interest.

Sources: Cambridge Associates LLC, Barclays, Dow Jones Indexes, Frank Russell Company, Standard & Poor's, Thomson Reuters Datastream, and Wilshire Associates, Inc.

*Capital change only.

U.S. Venture Capital Fund Index Details: One Quarter End-to-End Pooled Return
Net to Limited Partners

Quarter Ending	End to End Return	Quarter Ending	End to End Return	Quarter Ending	End to End Return	Quarter Ending	End to End Return	Quarter Ending	End to End Return
1981 Q1	0.00	1988 Q1	0.60	1995 Q1	6.94	2002 Q1	-8.33	2009 Q1	-2.56
1981 Q2	1.38	1988 Q2	1.96	1995 Q2	8.54	2002 Q2	-10.91	2009 Q2	0.24
1981 Q3	1.13	1988 Q3	0.01	1995 Q3	11.32	2002 Q3	-9.97	2009 Q3	1.99
1981 Q4	1.03	1988 Q4	1.01	1995 Q4	13.56	2002 Q4	-9.80	2009 Q4	3.44
1982 Q1	1.18	1989 Q1	0.82	1996 Q1	8.77	2003 Q1	-4.16	2010 Q1	0.67
1982 Q2	0.30	1989 Q2	2.07	1996 Q2	16.53	2003 Q2	0.47	2010 Q2	0.51
1982 Q3	1.02	1989 Q3	1.39	1996 Q3	4.69	2003 Q3	-1.46	2010 Q3	3.82
1982 Q4	2.73	1989 Q4	2.32	1996 Q4	6.49	2003 Q4	0.99	2010 Q4	8.30
1983 Q1	3.32	1990 Q1	0.70	1997 Q1	-0.15	2004 Q1	1.54	2011 Q1	5.02
1983 Q2	8.86	1990 Q2	2.20	1997 Q2	14.30	2004 Q2	0.02	2011 Q2	7.01
1983 Q3	-1.05	1990 Q3	-3.06	1997 Q3	14.24	2004 Q3	6.77	2011 Q3	-0.86
1983 Q4	6.09	1990 Q4	1.78	1997 Q4	2.94	2004 Q4	6.12	2011 Q4	1.57
1984 Q1	-0.53	1991 Q1	4.51	1998 Q1	10.09	2005 Q1	-2.08	2012 Q1	4.66
1984 Q2	-0.58	1991 Q2	1.56	1998 Q2	5.33	2005 Q2	2.29	2012 Q2	0.55
1984 Q3	-0.44	1991 Q3	6.18	1998 Q3	-1.99	2005 Q3	4.26	2012 Q3	0.61
1984 Q4	0.43	1991 Q4	7.24	1998 Q4	15.08	2005 Q4	2.31	2012 Q4	1.15
1985 Q1	1.53	1992 Q1	4.31	1999 Q1	19.37	2006 Q1	4.51	2013 Q1	2.52
1985 Q2	-2.00	1992 Q2	-1.23	1999 Q2	38.62	2006 Q2	0.32	2013 Q2	4.30
1985 Q3	-0.18	1992 Q3	2.57	1999 Q3	28.99	2006 Q3	2.22	2013 Q3	6.46
1985 Q4	2.65	1992 Q4	7.22	1999 Q4	84.06	2006 Q4	9.56		
1986 Q1	-0.01	1993 Q1	1.90	2000 Q1	29.43	2007 Q1	2.18		
1986 Q2	1.59	1993 Q2	4.88	2000 Q2	3.68	2007 Q2	6.30		
1986 Q3	0.29	1993 Q3	6.79	2000 Q3	10.72	2007 Q3	2.67		
1986 Q4	5.15	1993 Q4	4.46	2000 Q4	-19.85	2007 Q4	3.40		
1987 Q1	5.13	1994 Q1	4.12	2001 Q1	-14.98	2008 Q1	-1.74		
1987 Q2	2.20	1994 Q2	0.74	2001 Q2	-7.22	2008 Q2	0.17		
1987 Q3	1.96	1994 Q3	7.16	2001 Q3	-17.20	2008 Q3	-2.77		
1987 Q4	-2.93	1994 Q4	4.25	2001 Q4	-7.78	2008 Q4	-12.44		

The Cambridge Associates LLC U.S. Venture Capital Index® is an end-to-end calculation based on data compiled from 1,467 U.S. venture capital funds, including fully liquidated partnerships, formed between 1981 and 2013. Pooled end-to-end return, net of fees, expenses, and carried interest. Historic quarterly returns are updated in each year-end report to adjust for changes in the index sample.

U.S. Venture Capital Fund Index Details: End-to-End Pooled Return
Net to Limited Partners

Multi-Year Returns			
Years	End to End Return (%)	Years	End to End Return (%)
1 Year	15.09	21 Years	28.53
2 Years	11.20	22 Years	25.99
3 Years	14.38	23 Years	24.41
4 Years	12.91	24 Years	21.71
5 Years	7.51	25 Years	20.20
6 Years	6.15	26 Years	18.73
7 Years	8.06	27 Years	18.52
8 Years	8.22	28 Years	17.96
9 Years	8.47	29 Years	17.42
10 Years	8.58	30 Years	17.15
11 Years	6.92		
12 Years	4.11		
13 Years	0.04		
14 Years	8.94		
15 Years	26.14		
16 Years	23.51		
17 Years	27.22		
18 Years	34.12		
19 Years	34.16		
20 Years	30.05		

One Year Rolling Returns			
One Year Ended	End to End Return (%)	One Year Ended	End to End Return (%)
9/30/2013	15.09	9/30/1993	22.38
9/30/2012	7.68	9/30/1992	13.37
9/30/2011	20.78	9/30/1991	14.70
9/30/2010	8.67	9/30/1990	1.92
9/30/2009	-12.32	9/30/1989	5.46
9/30/2008	-1.16	9/30/1988	-0.17
9/30/2007	22.11	9/30/1987	14.84
9/30/2006	9.63	9/30/1986	4.35
9/30/2005	10.92	9/30/1985	-0.58
9/30/2004	9.78	9/30/1984	2.65
9/30/2003	-13.88		
9/30/2002	-32.32		
9/30/2001	-47.92		
9/30/2000	204.45		
9/30/1999	144.62		
9/30/1998	17.16		
9/30/1997	37.56		
9/30/1996	51.40		
9/30/1995	34.28		
9/30/1994	17.38		

The Cambridge Associates LLC U.S. Venture Capital Index[®] is an end-to-end calculation based on data compiled from 1,467 U.S. venture capital funds, including fully liquidated partnerships, formed between 1981 and 2013. Pooled end-to-end return, net of fees, expenses, and carried interest.



U.S. Venture Capital: Fund Since Inception Analysis



U.S. Venture Capital: Since Inception IRR & Multiples Compared to CA Modified Public Market Equivalent (mPME)
Net to Limited Partners

Vintage Year	Number of Funds	Pooled IRR (%) and IRR-Based Value-Add (bps)					Total Value to Paid In (TVPI)			Distributions to Paid In (DPI)		
		CA Benchmark	S&P 500 Index		Russell 2000® Index		CA Benchmark	S&P 500 Index	Russell 2000® Index	CA Benchmark	S&P 500 Index	Russell 2000® Index
			IRR	mPME IRR	Value-Add	mPME IRR						
1981	9	8.47	17.66	-918	13.32	-485	1.76	2.91	2.20	1.76	2.91	2.20
1982	11	7.38	17.25	-987	11.73	-435	1.79	3.22	2.24	1.79	3.22	2.24
1983	28	10.23	16.12	-589	10.47	-24	2.01	2.85	2.01	2.01	2.85	2.01
1984	32	8.65	15.46	-681	10.22	-157	1.77	2.53	1.88	1.77	2.53	1.88
1985	26	12.91	14.40	-148	9.98	293	2.69	2.53	1.93	2.69	2.53	1.93
1986	30	14.52	14.68	-16	11.69	283	2.90	2.85	2.29	2.89	2.84	2.29
1987	34	18.26	13.61	466	12.02	625	2.72	1.93	1.77	2.72	1.93	1.77
1988	26	18.89	15.20	369	13.66	523	2.49	2.02	1.85	2.41	1.98	1.81
1989	37	19.16	16.65	251	14.34	483	2.59	2.28	1.97	2.59	2.28	1.97
1990	17	33.11	15.81	1,730	15.48	1,763	3.15	1.71	1.65	3.15	1.71	1.65
1991	17	27.89	18.76	913	15.04	1,285	3.17	2.11	1.80	3.17	2.11	1.80
1992	22	32.59	20.45	1,214	14.17	1,842	3.09	1.94	1.58	3.08	1.94	1.58
1993	36	46.71	23.27	2,344	14.33	3,238	4.13	1.89	1.49	4.12	1.89	1.49
1994	42	59.26	22.03	3,723	12.64	4,661	5.40	1.79	1.43	5.39	1.78	1.43
1995	35	88.46	19.33	6,913	10.10	7,836	6.07	1.55	1.31	6.07	1.55	1.31
1996	42	100.73	12.10	8,863	8.27	9,245	4.91	1.36	1.30	4.89	1.33	1.27
1997	71	91.80	5.72	8,608	7.31	8,449	3.10	1.18	1.27	3.08	1.16	1.24
1998	81	11.91	1.34	1,057	7.45	445	1.49	1.06	1.41	1.43	1.01	1.33
1999	113	-0.64	1.55	-219	6.74	-738	0.96	1.10	1.47	0.84	0.96	1.28
2000	153	0.42	4.37	-395	7.71	-729	1.03	1.31	1.60	0.76	0.95	1.13
2001	55	2.50	5.86	-335	8.29	-579	1.15	1.38	1.56	0.79	0.90	1.00
2002	33	0.53	6.04	-552	8.01	-748	1.03	1.36	1.50	0.67	0.79	0.85
2003	38	9.01	5.90	311	7.19	182	1.58	1.35	1.44	0.80	0.72	0.75
2004	68	8.34	5.93	241	7.19	115	1.49	1.33	1.42	0.76	0.66	0.68
2005	64	6.18	7.49	-131	9.19	-301	1.30	1.37	1.47	0.42	0.43	0.45
2006	80	8.22	8.41	-18	10.33	-210	1.38	1.39	1.50	0.40	0.39	0.41
2007	63	13.84	10.76	308	13.06	78	1.53	1.39	1.50	0.37	0.34	0.35
2008	62	14.20	15.12	-92	17.61	-340	1.39	1.42	1.51	0.25	0.25	0.26
2009	21	14.97	16.12	-115	18.68	-371	1.34	1.37	1.44	0.16	0.15	0.15
2010	38	18.06	16.63	143	19.43	-137	1.33	1.30	1.36	0.09	0.09	0.09
2011	34	6.61	19.22	-1,260	25.51	-1,890	1.07	1.20	1.27	0.03	0.03	0.03

Notes: Based on data compiled from 1,418 U.S. venture capital funds, including fully liquidated partnerships, formed between 1981 and 2011. Internal rates of returns are net of fees, expenses and carried interest. Vintage year funds formed since 2010 are too young to have produced meaningful returns. Analysis and comparison of partnership returns to benchmark statistics may be irrelevant. Benchmarks with NA (not applicable) have an insufficient number of funds in the vintage year sample to produce a meaningful return.

mPME Note: Refer to Methodology page for further details on Cambridge Associates Modified PME (mPME).

Sources: Cambridge Associates LLC, Frank Russell Company, Standard & Poor's and Thomson Reuters Datastream.

U.S. Venture Capital: Since Inception IRR & Multiples Compared to CA Modified Public Market Equivalent (mPME)
Net to Limited Partners

Vintage Year	Number of Funds	Pooled IRR (%) and IRR-Based Value-Add (bps)			Total Value to Paid In (TVPI)		Distributions to Paid In (DPI)	
		CA Benchmark	Russell 3000® Index		CA Benchmark	Russell 3000® Index	CA Benchmark	Russell 3000® Index
			IRR	mPME IRR				
1981	9	8.47	16.77	-830	1.76	2.76	1.76	2.76
1982	11	7.38	16.33	-894	1.79	3.04	1.79	3.04
1983	28	10.23	15.22	-499	2.01	2.71	2.01	2.71
1984	32	8.65	14.72	-607	1.77	2.43	1.77	2.43
1985	26	12.91	13.76	-85	2.69	2.44	2.69	2.44
1986	30	14.52	14.32	20	2.90	2.77	2.89	2.77
1987	34	18.26	13.57	469	2.72	1.92	2.72	1.92
1988	26	18.89	15.11	378	2.49	2.01	2.41	1.97
1989	37	19.16	16.37	279	2.59	2.23	2.59	2.23
1990	17	33.11	15.80	1,731	3.15	1.70	3.15	1.70
1991	17	27.89	18.13	976	3.17	2.05	3.17	2.05
1992	22	32.59	19.43	1,315	3.09	1.88	3.08	1.88
1993	36	46.71	21.94	2,477	4.13	1.82	4.12	1.82
1994	42	59.26	20.68	3,858	5.40	1.74	5.39	1.73
1995	35	88.46	18.04	7,042	6.07	1.52	6.07	1.52
1996	42	100.73	11.70	8,902	4.91	1.36	4.89	1.33
1997	71	91.80	6.21	8,559	3.10	1.20	3.08	1.17
1998	81	11.91	2.24	967	1.49	1.11	1.43	1.05
1999	113	-0.64	2.30	-294	0.96	1.15	0.84	1.00
2000	153	0.42	4.98	-455	1.03	1.36	0.76	0.98
2001	55	2.50	6.43	-392	1.15	1.42	0.79	0.92
2002	33	0.53	6.55	-603	1.03	1.40	0.67	0.81
2003	38	9.01	6.32	269	1.58	1.38	0.80	0.73
2004	68	8.34	6.31	203	1.49	1.36	0.76	0.67
2005	64	6.18	7.93	-175	1.30	1.40	0.42	0.43
2006	80	8.22	8.89	-67	1.38	1.41	0.40	0.40
2007	63	13.84	11.31	253	1.53	1.42	0.37	0.34
2008	62	14.20	15.74	-154	1.39	1.44	0.25	0.25
2009	21	14.97	16.73	-177	1.34	1.39	0.16	0.15
2010	38	18.06	17.29	77	1.33	1.31	0.09	0.09
2011	34	6.61	20.54	-1,393	1.07	1.22	0.03	0.03

Notes: Based on data compiled from 1,418 U.S. venture capital funds, including fully liquidated partnerships, formed between 1986 and 2011. Internal rates of returns are net of fees, expenses and carried interest. Vintage year funds formed since 2010 are too young to have produced meaningful returns. Analysis and comparison of partnership returns to benchmark statistics may be irrelevant. Benchmarks with NA (not applicable) have an insufficient number of funds in the vintage year sample to produce a meaningful return.

mPME Note: Refer to Methodology page for further details on Cambridge Associates Modified PME (mPME).

Sources: Cambridge Associates LLC, Frank Russell Company, Standard & Poor's and Thomson Reuters Datastream.

U.S. Venture Capital Index and Selected Benchmark Statistics

Data as of
September 30, 2013

U.S. Venture Capital: Since Inception IRR & Multiples by Fund Vintage Year Net to Limited Partners

Vintage Year	Pooled Return (%)	Arithmetic Mean (%)	Median (%)	Equal-Weighted Pooled Return (%)	Upper Quartile (%)	Lower Quartile (%)	Standard Deviation (%)	DPI	RVPI	TVPI	Number of Funds
1981	8.47	9.01	7.87	9.03	13.24	5.94	5.59	1.76	0.00	1.76	9
1982	7.38	7.20	7.90	7.36	9.11	4.87	3.29	1.79	0.00	1.79	11
1983	10.23	9.55	8.72	10.09	12.46	7.10	5.73	2.01	0.00	2.01	28
1984	8.65	7.76	6.27	8.11	12.92	3.78	8.82	1.77	0.00	1.77	32
1985	12.91	11.70	12.86	12.88	17.35	5.49	8.21	2.69	0.00	2.69	26
1986	14.52	8.82	9.43	9.11	12.90	5.27	5.13	2.89	0.01	2.90	30
1987	18.26	14.53	15.65	15.82	22.18	8.70	10.64	2.72	0.00	2.72	34
1988	18.89	14.30	11.87	14.70	21.65	6.59	13.77	2.41	0.08	2.49	26
1989	19.16	17.05	13.31	18.88	28.80	7.75	14.46	2.59	0.00	2.59	37
1990	33.11	24.07	21.54	26.28	31.19	14.28	19.60	3.15	0.00	3.15	17
1991	27.89	24.02	18.56	25.64	27.86	11.64	20.33	3.17	0.00	3.17	17
1992	32.59	28.21	19.65	37.25	35.86	10.85	30.52	3.08	0.00	3.09	22
1993	46.71	30.43	18.83	41.09	46.49	12.05	31.10	4.12	0.00	4.13	36
1994	59.26	34.25	26.45	44.87	46.45	6.73	47.15	5.39	0.01	5.40	42
1995	88.46	56.57	41.65	77.41	80.62	21.53	58.46	6.07	0.00	6.07	35
1996	100.73	60.43	37.05	87.55	81.49	7.20	78.02	4.89	0.02	4.91	42
1997	91.80	53.68	9.64	73.72	63.34	-2.52	102.12	3.08	0.03	3.10	71
1998	11.91	16.75	-0.28	15.68	15.19	-6.15	71.46	1.43	0.06	1.49	81
1999	-0.64	-3.04	-2.43	-1.05	3.69	-11.40	17.73	0.84	0.12	0.96	113
2000	0.42	-2.50	-1.53	-0.05	3.76	-7.21	12.19	0.76	0.26	1.03	153
2001	2.50	-0.50	1.15	3.10	6.90	-4.88	18.56	0.79	0.36	1.15	55
2002	0.53	1.29	-0.20	3.28	8.25	-4.59	9.21	0.67	0.36	1.03	33
2003	9.01	0.35	1.87	6.55	8.74	-4.22	21.45	0.80	0.79	1.58	38
2004	8.34	2.90	1.84	8.77	8.15	-6.24	20.39	0.76	0.73	1.49	68
2005	6.18	2.10	4.58	6.02	9.30	-1.41	18.32	0.42	0.87	1.30	64
2006	8.22	4.68	6.18	6.27	11.40	-3.14	9.93	0.40	0.98	1.38	80
2007	13.84	12.82	12.14	14.76	19.27	6.51	17.06	0.37	1.16	1.53	63
2008	14.20	11.36	10.03	13.72	19.21	3.23	14.11	0.25	1.14	1.39	62
2009	14.97	10.06	9.77	12.44	16.57	4.80	14.01	0.16	1.19	1.34	21
2010	18.06	15.39	14.99	18.27	29.25	-2.63	21.04	0.09	1.24	1.33	38
2011	6.61	-2.81	-4.49	-0.75	11.75	-17.35	22.22	0.03	1.04	1.07	34

Notes: Based on data compiled from 1,418 U.S. venture capital funds, including fully liquidated partnerships, formed between 1981 and 2011. Internal rates of return are net of fees, expenses and carried interest. Vintage year funds formed since 2010 are too young to have produced meaningful returns. Analysis and comparison of partnership returns to benchmark statistics may be irrelevant.

U.S. Venture Capital: Total Value to Paid In Capital Multiple (TVPI)
Net to Limited Partners

Vintage Year	Pooled Return	Arithmetic Mean	Median	Upper Quartile	Lower Quartile	Number of Funds
1981	1.76	1.86	1.90	2.02	1.55	9
1982	1.79	1.94	1.74	2.20	1.54	11
1983	2.01	1.99	1.85	2.30	1.54	28
1984	1.77	1.70	1.71	2.04	1.27	32
1985	2.69	2.62	2.38	3.04	1.45	26
1986	2.90	1.83	1.87	2.07	1.46	30
1987	2.72	2.55	2.28	3.19	1.72	34
1988	2.49	2.14	2.12	2.52	1.47	26
1989	2.59	2.44	2.09	2.99	1.52	37
1990	3.15	2.72	2.44	2.80	1.60	17
1991	3.17	3.19	2.36	3.52	1.62	17
1992	3.09	3.49	2.22	3.18	1.55	22
1993	4.13	3.57	2.30	3.53	1.55	36
1994	5.40	3.78	2.16	4.43	1.34	42
1995	6.07	5.17	2.68	4.33	1.87	35
1996	4.91	4.44	2.18	4.61	1.27	42
1997	3.10	2.57	1.42	2.45	0.88	71
1998	1.49	1.57	0.99	1.58	0.63	81
1999	0.96	0.94	0.83	1.31	0.42	113
2000	1.03	1.00	0.89	1.27	0.61	153
2001	1.15	1.19	1.05	1.46	0.76	55
2002	1.03	1.20	0.99	1.49	0.80	33
2003	1.58	1.41	1.10	1.49	0.76	38
2004	1.49	1.50	1.10	1.47	0.74	68
2005	1.30	1.30	1.21	1.45	0.93	64
2006	1.38	1.28	1.27	1.55	0.87	80
2007	1.53	1.57	1.50	1.79	1.19	63
2008	1.39	1.39	1.27	1.59	1.09	62
2009	1.34	1.25	1.21	1.43	1.07	21
2010	1.33	1.31	1.23	1.53	0.97	38
2011	1.07	0.99	0.96	1.13	0.85	34

Notes: Based on data compiled from 1,418 U.S. venture capital funds, including fully liquidated partnerships, formed between 1981 and 2011. Internal rates of return are net of fees, expenses and carried interest. Vintage year funds formed since 2010 are too young to have produced meaningful returns. Analysis and comparison of partnership returns to benchmark statistics may be irrelevant. Benchmarks with NA (not applicable) have an insufficient number of funds in the vintage year sample to produce a meaningful return.

U.S. Venture Capital: Distribution to Paid In Capital Multiple (DPI)
Net to Limited Partners

Vintage Year	Pooled Return	Arithmetic Mean	Median	Upper Quartile	Lower Quartile	Number of Funds
1981	1.76	1.86	1.90	2.02	1.55	9
1982	1.79	1.94	1.74	2.20	1.54	11
1983	2.01	1.99	1.85	2.30	1.54	28
1984	1.77	1.70	1.71	2.04	1.27	32
1985	2.69	2.62	2.38	3.04	1.45	26
1986	2.89	1.83	1.87	2.07	1.46	30
1987	2.72	2.55	2.28	3.19	1.72	34
1988	2.41	2.11	2.08	2.52	1.43	26
1989	2.59	2.44	2.09	2.99	1.52	37
1990	3.15	2.72	2.44	2.80	1.60	17
1991	3.17	3.19	2.36	3.52	1.62	17
1992	3.08	3.48	2.22	3.18	1.55	22
1993	4.12	3.56	2.30	3.53	1.51	36
1994	5.39	3.76	2.13	4.43	1.34	42
1995	6.07	5.16	2.68	4.33	1.87	35
1996	4.89	4.41	2.15	4.58	1.27	42
1997	3.08	2.54	1.35	2.40	0.87	71
1998	1.43	1.49	0.95	1.53	0.62	81
1999	0.84	0.82	0.67	1.17	0.31	113
2000	0.76	0.72	0.65	1.03	0.39	153
2001	0.79	0.84	0.71	1.07	0.47	55
2002	0.67	0.72	0.58	1.12	0.35	33
2003	0.80	0.69	0.50	0.84	0.20	38
2004	0.76	0.78	0.36	0.75	0.17	68
2005	0.42	0.46	0.33	0.61	0.17	64
2006	0.40	0.33	0.28	0.54	0.11	80
2007	0.37	0.41	0.27	0.55	0.11	63
2008	0.25	0.29	0.22	0.38	0.04	62
2009	0.16	0.15	0.01	0.11	0.00	21
2010	0.09	0.09	0.00	0.14	0.00	38
2011	0.03	0.02	0.00	0.00	0.00	34

Notes: Based on data compiled from 1,418 U.S. venture capital funds, including fully liquidated partnerships, formed between 1981 and 2011. Internal rates of return are net of fees, expenses and carried interest. Vintage year funds formed since 2010 are too young to have produced meaningful returns. Analysis and comparison of partnership returns to benchmark statistics may be irrelevant. Benchmarks with NA (not applicable) have an insufficient number of funds in the vintage year sample to produce a meaningful return.

U.S. Venture Capital: Residual Value to Paid In Capital Multiple (RVPI)
Net to Limited Partners

Vintage Year	Pooled Return	Arithmetic Mean	Median	Upper Quartile	Lower Quartile	Number of Funds
1981	0.00	0.00	0.00	0.00	0.00	9
1982	0.00	0.00	0.00	0.00	0.00	11
1983	0.00	0.00	0.00	0.00	0.00	28
1984	0.00	0.00	0.00	0.00	0.00	32
1985	0.00	0.00	0.00	0.00	0.00	26
1986	0.01	0.00	0.00	0.00	0.00	30
1987	0.00	0.00	0.00	0.00	0.00	34
1988	0.08	0.04	0.00	0.00	0.00	26
1989	0.00	0.00	0.00	0.00	0.00	37
1990	0.00	0.00	0.00	0.00	0.00	17
1991	0.00	0.00	0.00	0.00	0.00	17
1992	0.00	0.01	0.00	0.00	0.00	22
1993	0.00	0.00	0.00	0.00	0.00	36
1994	0.01	0.01	0.00	0.00	0.00	42
1995	0.00	0.01	0.00	0.00	0.00	35
1996	0.02	0.03	0.00	0.04	0.00	42
1997	0.03	0.03	0.00	0.03	0.00	71
1998	0.06	0.08	0.01	0.10	0.00	81
1999	0.12	0.12	0.07	0.16	0.01	113
2000	0.26	0.28	0.19	0.31	0.08	153
2001	0.36	0.35	0.28	0.47	0.15	55
2002	0.36	0.48	0.28	0.62	0.16	33
2003	0.79	0.73	0.50	0.67	0.43	38
2004	0.73	0.72	0.60	0.96	0.42	68
2005	0.87	0.84	0.79	1.14	0.49	64
2006	0.98	0.95	0.94	1.14	0.66	80
2007	1.16	1.16	1.05	1.41	0.84	63
2008	1.14	1.10	1.04	1.21	0.85	62
2009	1.19	1.10	1.10	1.25	0.98	21
2010	1.24	1.22	1.11	1.40	0.97	38
2011	1.04	0.98	0.93	1.09	0.85	34

Notes: Based on data compiled from 1,418 U.S. venture capital funds, including fully liquidated partnerships, formed between 1981 and 2011. Internal rates of return are net of fees, expenses and carried interest. Vintage year funds formed since 2010 are too young to have produced meaningful returns. Analysis and comparison of partnership returns to benchmark statistics may be irrelevant. Benchmarks with NA (not applicable) have an insufficient number of funds in the vintage year sample to produce a meaningful return.

U.S. Venture Capital: Since Inception IRR Based on Fund Capitalization
Net to Limited Partners (%)

Vintage Year	All Funds ¹		Capitalization <=\$50mm		Capitalization >\$50mm<=\$150mm		Capitalization >\$150mm	
	Pooled Return	Number of Funds	Pooled Return	Number of Funds	Pooled Return	Number of Funds	Pooled Return	Number of Funds
1981	8.47	9	8.72	7	NA	2	NA	0
1982	7.38	11	7.17	8	NA	2	NA	1
1983	10.23	28	10.80	15	8.94	8	10.76	5
1984	8.65	32	8.25	19	10.51	10	4.91	3
1985	12.91	26	11.68	18	13.32	7	NA	1
1986	14.52	30	7.84	21	11.36	5	16.36	4
1987	18.26	34	13.66	17	19.62	11	19.95	6
1988	18.89	26	11.47	17	18.27	5	27.49	4
1989	19.16	37	14.65	22	24.38	9	18.94	6
1990	33.11	17	19.67	9	39.24	7	NA	1
1991	27.89	17	21.72	8	29.90	8	NA	1
1992	32.59	22	47.23	9	49.08	5	22.67	8
1993	46.71	36	14.89	16	57.22	15	43.32	5
1994	59.26	42	25.43	17	49.01	22	89.63	3
1995	88.46	35	42.41	9	103.29	24	31.63	2
1996	100.73	42	48.15	9	105.35	18	101.49	15
1997	91.80	71	11.37	20	78.36	34	107.47	17
1998	11.91	81	107.30	15	8.02	34	12.00	32
1999	-0.64	113	1.91	13	-1.01	33	-0.65	67
2000	0.42	153	-1.37	21	-0.56	45	0.55	87
2001	2.50	55	3.11	17	1.88	10	2.52	28
2002	0.53	33	2.62	10	4.79	12	-0.97	11
2003	9.01	38	2.77	8	3.90	11	9.80	19
2004	8.34	68	4.09	11	19.23	13	7.44	44
2005	6.18	64	7.77	10	3.37	12	6.33	42
2006	8.22	80	6.16	10	4.79	27	8.73	43
2007	13.84	63	9.81	7	23.21	10	13.30	46
2008	14.20	62	16.44	14	8.89	11	14.39	37
2009	14.97	21	NA	2	5.80	4	15.56	15
2010	18.06	38	26.12	7	10.29	7	18.33	24
2011	6.61	34	15.22	3	-4.14	9	7.60	22

Notes: ¹Based on data compiled from 1,418 U.S. venture capital funds, including fully liquidated partnerships, formed between 1981 and 2011. Returns are net of fees, expenses and carried interest. To reflect fundraising environment, returns for vintage year 1981 through 1991 are represented by capitalization amounts of <\$50mm, >\$50mm and <\$100mm, and >\$100mm. Vintage year funds formed since 2010 are too young to have produced meaningful returns. Analysis and comparison of partnership returns to benchmark statistics may be irrelevant. Benchmarks with NA (not applicable) have an insufficient number of funds in the vintage year sample to produce a meaningful return.

U.S. Venture Capital: Since Inception IRR Based on Fund Initial Stage
Net to Limited Partners (%)

Vintage Year	All Funds ¹		Early Stage		Late & Expansion Stage		Multi-Stage	
	Pooled Return	Number of Funds	Pooled Return	Number of Funds	Pooled Return	Number of Funds	Pooled Return	Number of Funds
1981	8.47	9	10.74	6	NA	0	4.75	3
1982	7.38	11	7.67	10	NA	0	NA	1
1983	10.23	28	8.87	17	10.47	4	12.01	7
1984	8.65	32	8.42	21	NA	2	7.80	9
1985	12.91	26	13.65	18	NA	2	11.71	6
1986	14.52	30	9.25	21	NA	2	16.12	7
1987	18.26	34	17.34	20	20.9	6	17.14	8
1988	18.89	26	21.56	18	NA	1	14.51	7
1989	19.16	37	24.51	26	NA	2	15.58	9
1990	33.11	17	39.28	9	23.27	3	20.78	5
1991	27.89	17	29.61	13	NA	1	25.31	3
1992	32.59	22	36.78	15	20.2	3	25.71	4
1993	46.71	36	56.07	24	NA	2	19.82	10
1994	59.26	42	71.64	29	22.44	5	42.55	7
1995	88.46	35	102.19	24	33.82	3	17.51	8
1996	100.73	42	130.09	26	44.6	3	45.14	12
1997	91.80	71	117.22	54	106.4	6	6.72	11
1998	11.91	81	16.88	52	7.47	7	4.93	22
1999	-0.64	113	-5.72	70	4.05	20	6.36	22
2000	0.42	153	0.05	106	4.49	17	-0.13	29
2001	2.50	55	1.72	30	5.91	3	3.44	22
2002	0.53	33	0.57	22	0.43	6	-0.48	4
2003	9.01	38	9.71	27	9.98	4	2.26	7
2004	8.34	68	11.56	41	3.74	9	2.38	18
2005	6.18	64	4.26	42	24.1	6	4.36	16
2006	8.22	80	5.84	42	11.89	14	9.19	24
2007	13.84	63	15.67	34	14.06	6	11.93	22
2008	14.20	62	15.48	36	4.42	9	15.85	17
2009	14.97	21	18.13	12	NA	1	13.19	8
2010	18.06	38	18.08	23	13.98	6	22.88	9
2011	6.61	34	7.06	23	4.01	5	7.00	6

Notes: ¹Based on data compiled from 1,418 U.S. venture capital funds, including fully liquidated partnerships, formed between 1981 and 2011. Excludes 6 Venture Debt stage funds. Returns are net of fees, expenses and carried interest. Vintage year funds formed since 2010 are too young to have produced meaningful returns. Analysis and comparison of partnership returns to benchmark statistics may be irrelevant. Benchmarks with NA (not applicable) have an insufficient number of funds in the vintage year sample to produce a meaningful return.

U.S. Venture Capital: Since Inception IRR Based on Fund Industry
Net to Limited Partners (%)

Vintage Year	All Funds ¹		Focused		Multi-Industry	
	Pooled Return	Number of Funds	Pooled Return	Number of Funds	Pooled Return	Number of Funds
1981	8.47	9	9.68	3	7.47	6
1982	7.38	11	6.98	6	8.31	5
1983	10.23	28	9.26	12	10.74	16
1984	8.65	32	10.86	14	7.02	18
1985	12.91	26	14.49	12	10.71	14
1986	14.52	30	9.55	14	16.36	16
1987	18.26	34	20.11	15	17.22	19
1988	18.89	26	21.86	17	15.23	9
1989	19.16	37	27.20	16	15.94	21
1990	33.11	17	37.26	9	20.07	8
1991	27.89	17	29.78	14	10.84	3
1992	32.59	22	38.49	15	18.39	7
1993	46.71	36	48.09	22	44.28	14
1994	59.26	42	63.63	32	40.08	10
1995	88.46	35	102.58	28	29.25	7
1996	100.73	42	97.42	35	126.25	7
1997	91.80	71	96.41	51	80.44	20
1998	11.91	81	15.64	68	-1.59	13
1999	-0.64	113	-0.81	95	0.78	18
2000	0.42	153	-0.03	133	4.21	20
2001	2.50	55	2.44	47	2.85	8
2002	0.53	33	-0.19	26	4.86	7
2003	9.01	38	9.40	34	1.06	4
2004	8.34	68	9.27	60	2.66	8
2005	6.18	64	7.54	50	-0.25	14
2006	8.22	80	8.53	68	6.22	12
2007	13.84	63	16.40	48	7.80	15
2008	14.20	62	15.20	45	12.87	17
2009	14.97	21	18.23	14	10.97	7
2010	18.06	38	16.68	29	22.55	9
2011	6.61	34	8.30	24	0.55	10

Notes: ¹Based on data compiled from 1,418 U.S. venture capital funds, including fully liquidated partnerships, formed between 1981 and 2011. Returns are net of fees, expenses and carried interest. Vintage year funds formed since 2010 are too young to have produced meaningful returns. Analysis and comparison of partnership returns to benchmark statistics may be irrelevant. Benchmarks with NA (not applicable) have an insufficient number of funds in the vintage year sample to produce a meaningful return.

U.S. Venture Capital: Since Inception IRR Based on Fund Region
Net to Limited Partners (%)

Vintage Year	All Funds ¹		Focused		Multi-Region	
	Pooled Return	Number of Funds	Pooled Return	Number of Funds	Pooled Return	Number of Funds
1981	8.47	9	6.89	4	9.50	5
1982	7.38	11	8.37	4	6.80	7
1983	10.23	28	9.27	15	10.88	13
1984	8.65	32	9.51	14	7.96	18
1985	12.91	26	14.67	14	11.95	12
1986	14.52	30	8.90	12	15.36	18
1987	18.26	34	18.68	19	17.66	15
1988	18.89	26	17.02	11	20.68	15
1989	19.16	37	26.64	22	15.21	15
1990	33.11	17	27.76	9	35.91	8
1991	27.89	17	19.35	7	36.71	10
1992	32.59	22	52.43	9	18.87	13
1993	46.71	36	54.10	17	38.79	19
1994	59.26	42	79.44	24	27.73	18
1995	88.46	35	112.01	19	55.38	16
1996	100.73	42	161.38	18	34.78	24
1997	91.80	71	152.97	33	43.52	38
1998	11.91	81	24.16	40	3.90	41
1999	-0.64	113	0.90	57	-1.76	56
2000	0.42	153	-0.03	70	0.63	83
2001	2.50	55	2.05	21	2.78	34
2002	0.53	33	1.86	13	0.08	20
2003	9.01	38	10.39	20	8.11	18
2004	8.34	68	7.47	27	8.77	41
2005	6.18	64	1.21	20	7.65	44
2006	8.22	80	5.01	34	9.62	46
2007	13.84	63	20.19	20	11.95	43
2008	14.20	62	17.99	22	12.93	40
2009	14.97	21	19.94	6	13.48	15
2010	18.06	38	22.38	19	13.69	19
2011	6.61	34	8.27	12	5.47	22

Notes: ¹Based on data compiled from 1,418 U.S. venture capital funds, including fully liquidated partnerships, formed between 1981 and 2011. Returns are net of fees, expenses and carried interest. Vintage year funds formed since 2010 are too young to have produced meaningful returns. Analysis and comparison of partnership returns to benchmark statistics may be irrelevant. Benchmarks with NA (not applicable) have an insufficient number of funds in the vintage year sample to produce a meaningful return.



U.S. Venture Capital: Company Analysis

U.S. Venture Capital: Since Inception IRR by Company Initial Investment Year
By Industry

Pooled Gross IRR (%) of Companies Receiving Initial Investment In:															
Industry	1997	1998	1999	2000	2001	2002	2003	2004	2005	2006	2007	2008	2009	2010	2011
Chemical/Materials	5.76	12.79	-8.64	-26.14	-15.51	-21.12	-0.47	-17.64	9.59	-5.37	21.31	-4.37	-1.46	45.28	127.13
Consumer/Retail	-7.10	7.36	1.01	-0.87	12.15	3.95	7.52	13.53	3.93	1.53	-0.95	14.03	-5.92	14.31	14.77
Electronics	57.22	190.08	1.20	-14.54	-3.57	0.24	-6.76	3.45	-3.00	-4.43	-0.67	3.84	11.25	16.39	22.60
Energy	10.33	6.50	-2.47	5.31	-4.05	9.85	37.32	1.31	-2.62	-8.71	10.96	-10.04	-6.32	-2.27	7.14
Environmental	-100.00	NA	NA	NA	-18.78	21.59	-74.06	-83.76	-99.58	-46.74	-8.55	0.39	-8.44	13.50	26.63
Financial Services	9.57	31.15	5.66	12.87	22.58	18.77	15.52	24.61	12.73	20.39	2.07	14.04	17.60	22.67	25.58
Hardware/Systems	50.95	152.32	2.79	-8.69	12.01	-15.08	2.35	17.94	-0.71	-2.99	44.64	9.66	60.18	67.18	74.91
Health Care/Biotech *	7.37	17.53	13.50	2.19	8.87	7.02	14.15	7.61	10.28	6.10	10.38	13.06	25.99	25.98	24.21
Industrial	-99.89	16.32	10.91	-99.99	-100.00	NA	42.81	70.67	2.39	13.68	2.38	33.40	NA	-0.03	89.04
Information Technology *	275.66	266.48	26.24	-3.19	-1.79	7.60	14.93	14.95	25.32	17.79	19.69	27.80	45.54	39.97	20.53
Manufacturing	58.55	-14.11	8.46	-3.44	21.40	-13.65	20.76	-1.02	-10.42	17.11	5.45	5.89	20.17	1.15	39.25
Media/Communications	-0.81	187.49	14.33	0.73	4.38	4.52	11.40	15.28	9.59	-4.57	3.59	24.49	31.18	38.26	17.13
Software/Services	120.48	103.48	-4.35	-5.63	1.32	17.62	10.12	25.96	6.22	13.51	12.69	24.77	49.90	36.98	36.17
Other/Fund of Funds	-100.00	13.52	-31.88	-25.36	NA	-18.47	20.73	9.12	5.09	-1.47	0.30	-0.62	14.28	4.34	56.49
All Companies	136.38	146.29	12.99	-2.84	3.76	8.95	11.11	13.63	12.56	8.68	12.44	17.96	33.13	31.08	26.36
Number of Companies	1,046	1,517	2,336	3,035	1,525	1,296	1,300	1,533	1,471	1,676	1,779	1,584	1,003	1,368	1,644

* See following exhibit for industry subgroups.
NA indicates inadequate number of companies in sample.

U.S. Venture Capital: Since Inception IRR by Company Initial Investment Year
By Health Care/Biotech and Information Technology Subgroups

Pooled Gross IRR (%) of Companies Receiving Initial Investment In:															
Subgroup	1997	1998	1999	2000	2001	2002	2003	2004	2005	2006	2007	2008	2009	2010	2011
Biotechnology/Biopharm/R&D	10.27	50.56	70.71	-3.32	9.04	5.84	21.39	4.72	13.98	7.32	13.59	11.56	32.43	33.56	27.50
Health Care Devices	7.08	3.69	7.93	6.68	3.13	-0.78	4.16	0.58	7.76	1.87	1.84	8.35	5.37	13.61	13.55
Health Care Services	2.96	9.70	6.86	9.26	14.42	13.84	19.80	21.80	13.56	11.63	13.43	14.34	25.32	15.31	20.21
Health Care Software/Systems	9.14	4.58	2.89	-0.76	2.64	-3.20	-14.19	20.27	10.80	-3.38	22.14	46.82	18.41	16.76	29.93
Pharmaceuticals	6.64	23.64	19.57	18.03	15.84	29.41	17.72	16.53	-0.51	10.34	10.28	8.93	37.20	33.59	35.22
Internet-eBusiness	138.54	105.63	-6.53	-2.53	4.45	25.06	28.62	40.39	18.16	15.90	15.22	26.29	42.40	36.85	27.91
Internet-eCommerce	682.30	243.47	22.63	9.24	16.02	4.98	38.70	21.54	48.00	32.46	26.78	40.77	54.31	42.49	16.47
Telecom Network/Systems	243.90	362.14	284.52	-8.65	-2.11	12.77	5.51	4.71	1.17	-6.89	23.77	19.34	18.46	24.40	11.00
Telecom Products	241.18	261.06	69.67	-10.17	-8.56	-11.83	9.37	-7.55	-6.41	-21.30	-6.50	-3.22	49.80	50.04	5.53
Telecom Services	138.95	104.28	-11.35	-2.85	3.71	7.69	9.97	4.87	-1.69	7.59	12.86	-5.54	-65.88	41.44	12.60

Description of Performance Measurement Methodology

Cambridge Associates LLC (CA) has established a database to monitor investments made by venture capital and other alternative asset partnerships. On September 30, 2013, 1,467 U.S. venture capital funds from the years 1981 through 2013 were included in the sample. Users of the analysis may find the following description of the data sources and calculation techniques helpful to their interpretation of information presented in the report:

1. Partnership financial statements and narratives are the primary source of information concerning cash flows and ending residual/ net asset values (NAV) for both partnerships and portfolio company investments.
2. Recognizing the alternative asset community's sensitivity to the distribution of information pertaining to individual fund investments, as a matter of policy CA only releases aggregated figures in its benchmark report.
3. Vintage year is defined as the legal inception date as noted in a fund's financial statement.
4. CA uses both the internal rate of return and the end-to-end performance calculation in its benchmark reports:
 - a. The internal rate of return (IRR) is a since inception calculation that solves for the discount rate, which makes the net present value of an investment equal to zero. The calculation is based on cash-on-cash returns over equal periods modified for the residual value of the partnership's equity or portfolio company's NAV. The residual value attributed to each respective group being measured is incorporated as its ending value. Transactions are accounted for on a quarterly basis, and annualized values are used for reporting purposes. Please note that all transactions are recorded on the 45th day or midpoint of the quarter.
 - b. The end-to-end performance calculation is similar to the IRR, however it is measuring the return between two points in time. The calculation takes into account the beginning NAV as the initial investment. The subsequent quarterly cash flows and the ending NAV for the specified time period (i.e. one quarter, one year, etc.) are utilized in the same fashion as the IRR calculation. All returns greater than one year are annualized.
5. Additional Definitions:
 - a. **Pooled return** aggregates all cash flows and ending NAVs in a sample to calculate a dollar-weighted return.
 - b. **Arithmetic mean** averages the individual fund IRRs included in a vintage year.
 - c. **Median** is the middle fund IRR of the group of individual fund IRRs included in a vintage year.
 - d. **Equal-weighted pooled return** equally weights all cash flows and ending NAVs based on paid in capital to calculate a dollar-weighted return.
 - e. **Upper/ lower quartile** are the thresholds for the upper (top 25%) and lower (bottom 25%) quartiles based on the individual fund IRRs included in a vintage year. Can be used in conjunction with the median to determine quartile placement.
6. **Realization ratio exhibits (TVPI, DPI, RVPI):** CA has independently calculated the proper realization ratio for each fund in each vintage year. Please note that each fund has been ranked within its respective vintage year by the corresponding realization ratio, as opposed to being ranked by IRR as they are ranked in the since inception IRR exhibit. As a result a fund's ranking within its vintage year may change. For example, it is possible that a vintage year can have a different median fund when ranked by IRR vs. when ranked by TVPI, DPI or RVPI.

Description of Performance Measurement Methodology (Continued)

7. **Cambridge Associates Modified Public Market Equivalent (mPME):** The mPME calculation is a private-to-public comparison that seeks to replicate private investment performance under public market conditions. The public index's shares are purchased and sold according to the private fund cash flow schedule, with distributions calculated in the same proportion as the private fund, and the mPME NAV (the value of the shares held by the public equivalent) is a function of mPME cash flows and public index returns. The mPME attempts to evaluate what return would have been earned had the dollars been deployed in the public markets instead of in private investments while avoiding the "negative NAV" issue inherent in some PME methodologies. "Value-Add" shows (in basis points) the difference between the actual private investment return and the mPME calculated return.
8. Exhibits detailing data for portfolio companies are grouped by year of the fund's initial investment in a company, as opposed to vintage year. Returns are gross returns.

Copyright © 2013 by Cambridge Associates LLC. All rights reserved. Confidential.

This report may not be displayed, reproduced, distributed, transmitted, or used to create derivative works in any form, in whole or in portion, by any means, without written permission from Cambridge Associates LLC (“CA”). Copying of this publication is a violation of U.S. and international copyright laws (17 U.S.C. 101 et seq.). Violators of this copyright may be subject to liability for substantial monetary damages. The information and material published in this report are confidential and non-transferable. Therefore, clients may not disclose any information or material derived from this report to third parties, or use information or material from this report, without prior written authorization. An authorized client may download this report and make one archival print copy. The information or material contained in this report may only be shared with those directors, officers, staff, and investment committee members or trustees having a need to know and with the understanding that these individuals will treat it confidentially. Violators of these confidentiality provisions may be subject to liability for substantial monetary damages, injunctive action, and all other remedies available at law or equity. Additionally, information from this report may be disclosed if disclosure is required by law or court order, but clients are required to provide notice to CA reasonably in advance of such disclosure.

This report is provided for informational purposes only. It is not intended to constitute an offer of securities of any of the issuers that may be described in the report. This report is provided only to persons that CA believes are: (i) “Accredited Investors” as that term is defined in Regulation D under the U.S. Securities Act of 1933; (ii) “Qualified Purchasers,” as defined in Section 2(a)(51) of the U.S. Investment Company Act of 1940; (iii) of a kind described in Article 19 or Article 49 of the Financial Services and Markets Act 2000; and (iv) able to meet the requirements for investors as defined in the offering documents. Potential investors should completely review all Fund offering materials before considering an investment. No part of this report is intended as a recommendation of any firm or any security. Nothing contained in this report should be construed as the provision of tax or legal advice. Information contained herein may have been provided by third parties, including investment firms providing information on returns and assets under management, and may not have been independently verified. CA can neither assure nor accept responsibility for accuracy, but substantial legal liability may apply to misrepresentations of results made by a manager that are delivered to CA electronically, by wire or through the mail. Managers may report returns to CA gross (before the deduction of management fees), net (after the deduction of management fees) or both. Past performance is not indicative of future performance. Any information or opinions provided in this report are as of the date of the report and CA is under no obligation to update the information or communicate that any updates have been made.

Where referenced, the CA manager universe statistics, including medians, are derived from CA’s proprietary database covering investment managers. These universe statistics and rankings exclude managers that exclude cash from their reported total returns, and for calculations including any years from 1998 to the present, those managers with less than US\$50 million in product assets. Returns for inactive (discontinued) managers are included if performance is available for the entire period measured. CA does not necessarily endorse or recommend the managers in this universe.

Cambridge Associates, LLC is a Massachusetts limited liability company with offices in Arlington, VA; Boston, MA; Dallas, TX; and Menlo Park, CA. Cambridge Associates Limited is registered as a limited company in England and Wales No. 06135829 and is authorised and regulated by the Financial Services Authority in the conduct of Investment Business. Cambridge Associates Limited, LLC is a Massachusetts limited liability company with a branch office in Sydney, Australia (ARBN 109 366 654). Cambridge Associates Asia Pte Ltd is a Singapore corporation (Registration No. 200101063G). Cambridge Associates Investment Consultancy (Beijing) Ltd is a wholly owned subsidiary of Cambridge Associates, LLC and is registered with the Beijing Administration for Industry and Commerce (Registration No. 110000450174972).



CAMBRIDGE ASSOCIATES LLC